

COMPONENT PARTS LOCATION GUIDE <MAIN/YB10317-01-03>

(1/2)

REF.NO.	LOCATION	REF.NO.	LOCATION	REF.NO.	LOCATION	REF.NO.	LOCATION	REF.NO.	LOCATION	REF.NO.	LOCATION	REF.NO.	LOCATION	REF.NO.	LOCATION	REF.NO.	LOCATION
<b>CAPACITOR</b>																	
C1001	B C	C2004	A C	C3502	A C	C4301	B C	C5520	A C	C8025	B C	IC3951	A C	C3001	B C	C2005	A C
C1002	B C	C2006	A C	C3503	A C	C4302	B C	C6001	A C	C8026	B C	IC4201	B C	C2007	B C	C2006	A C
C1003	B C	C2007	A C	C3504	A C	C4303	B C	C6004	A C	C8027	B C	IC4202	B C	C2008	B C	C2007	A C
C1004	B C	C2008	A C	C3505	A C	C4304	B C	C6005	A C	C8028	B C	IC4301	B C	C2009	B C	C2008	A C
C1005	B C	C2009	A C	C3506	A C	C4305	B C	C6101	A C	C8029	B C	IC4302	B C	C2010	B C	C2009	A C
C1006	B C	C2010	A C	C3507	A C	C4306	B C	C6102	A C	C8030	B C	IC4304	B C	C2011	B C	C2010	A C
C1007	B C	C2011	A C	C3508	A C	C4307	B C	C6103	A C	C8031	B C	IC4802	A C	C2012	B C	C2011	A C
C1008	B C	C2012	A C	C3509	A C	C4308	B C	C6105	A C	C8039	B C	IC4803	A C	C2013	B C	C2012	A C
C1009	B C	C2013	A C	C3510	A C	C4309	B C	C6106	A C	C8040	B C	IC4804	A C	C2014	B C	C2013	A C
C1010	B C	C2014	A C	C3511	A C	C4310	B C	C6107	A C	C8045	B C	IC4806	A C	C2015	B C	C2014	A C
C1011	B C	C2015	A C	C3512	A C	C4311	B C	C6108	A C	C8046	B C	IC4851	A C	C2016	B C	C2015	A C
C1012	B C	C2016	A C	C3513	A C	C4312	B C	C6109	A C	C8047	B C	IC5501	A C	C2017	B C	C2016	A C
C1013	B C	C2017	A C	C3514	A C	C4313	B C	C6110	A C	C8051	B C	IC6001	A C	C2018	B C	C2017	A C
C1014	B C	C2018	A C	C3515	A C	C4314	B C	C6111	A C	C8052	B C	IC6101	A C	C2019	B C	C2018	A C
C1015	B C	C2019	A C	C3516	A C	C4315	B C	C6112	A C	C8053	B C	IC8001	B C	C2020	B C	C2019	A C
C1016	B C	C2020	A C	C3517	A C	C4317	B C	C6113	A C	C8054	B C	IC8002	B C	C2021	B C	C2020	A C
C1017	B C	C2021	A C	C3518	A C	C4318	B C	C6114	A C	C8055	B C	IC8003	B C	C2022	B C	C2021	A C
C1018	B C	C2022	A C	C3519	A C	C4319	B C	C6115	A C	C8041	A C	IC8004	B C	C2023	B C	C2022	A C
C1019	B C	C2023	A C	C3520	A C	C4320	B C	C6116	A C	C8402	A C	IC8005	B C	C2024	B C	C2023	A C
C1020	B C	C2024	A C	C3521	A C	C4321	B C	C6117	A C	C8403	A C	IC8006	B C	C2025	B C	C2024	A C
C1021	B C	C2025	A C	C3522	A C	C4322	B C	C6118	A C	C8404	A C	IC8007	B C	C2026	B C	C2025	A C
C1022	B C	C2026	A C	C3523	A C	C4323	B C	C6119	A C	C8405	A C	IC8051	B C	C2027	B C	C2026	A C
C1023	B C	C2027	A C	C3524	A C	C4324	B C	C6120	A C	C8406	A C	IC8052	B C	C2028	B C	C2027	A C
C1024	B C	C2028	A C	C3525	A C	C4325	B C	C6121	A C	C8407	A C	IC8053	B C	C2029	B C	C2028	A C
C1025	B C	C2029	A C	C3526	A C	C4326	B C	C6122	A C	C8408	A C	IC8401	A C	C2030	B C	C2029	A C
C1026	B C	C2030	A C	C3527	A C	C4327	B C	C6123	A C	C8409	A C	IC8402	A C	C2031	B C	C2030	A C
C1027	B C	C2031	A C	C3528	A C	C4328	B C	C6124	A C			IC8403	A C	C2032	B C	C2031	A C
C1028	B C	C2032	A C	C3529	A C	C4329	B C	C6125	A C	<b>CONNECTOR</b>			<b>COIL</b>				
C1029	B C	C2033	A C	C3530	A C	C4330	B C	C6126	A C	CN101	A C	3A	L1001	B C	5A		
C1030	B C	C2034	A C	C3531	A C	C4331	B C	C6127	A C	CN102	A C	5B	L1002	B C	4A		
C1031	B C	C2035	A C	C3532	A C	C4332	B C	C6128	A C	CN103	B C	5B	L1401	B C	3B		
C1032	B C	C2036	A C	C3533	A C	C4333	B C	C6129	A C	CN104	A C	1B	L1402	B C	3B		
C1033	B C	C2037	A C	C3534	A C	C4334	B C	C6130	A C	CN105	B C	1B	L2001	A C	4A		
C1034	B C	C2038	A C	C3535	A C	C4335	B C	C6131	A C	CN106	A C	5A	L2002	A C	4B		
C1035	B C	C2039	A C	C3536	A C	C4336	B C	C6132	A C	CN107	A C	4D	L3001	B C	1A		
C1036	B C	C2040	A C	C3537	A C	C4337	B C	C6133	A C	CN108	A C	4C	L3002	B C	1A		
C1037	B C	C2041	A C	C3538	A C	C4338	B C	C6134	A C	CN109	A C	1D	L3003	B C	1A		
C1038	B C	C2042	A C	C3539	A C	C4339	B C	C6201	A C	CN110	A C	2D	L3004	B C	1A		
C1039	B C	C2043	A C	C3540	A C	C4340	B C	C6202	A C	CN111	B C	1B	L3005	B C	1A		
C1040	A C	C2044	A C	C3541	A C	C4341	B C	C6203	A C	CN112	B C	4D	L3006	B C	3A		
C1041	A C	C2045	A C	C3542	A C	C4342	B C	C6204	A C	CN113	A C	3D	L3007	B C	3A		
C1307	B C	C2046	A C	C3543	A C	C4343	B C	C6205	A C	<b>DIODE</b>			L3008	B C	3A		
C1401	B C	C2047	A C	C3544	A C	C4344	B C	C6206	A C	D1001	B C	4A	L3009	B C	3A		
C1402	B C	C2048	A C	C3545	A C	C4345	B C	C6207	A C	D1002	A C	1B	L3010	B C	1A		
C1403	B C	C2049	A C	C3546	A C	C4346	B C	C6208	A C	D1301	B C	3A	L3011	B C	1A		
C1404	B C	C2050	A C	C3547	A C	C4347	B C	C6209	A C	D1302	B C	3A	L3012	B C	1A		
C1405	B C	C2051	A C	C3548	A C	C4348	B C	C6210	A C	D1602	B C	3D	L3013	B C	3A		
C1406	B C	C2052	A C	C3549	A C	C4349	B C	C6211	A C	D1603	B C	4D	L3501	A C	3C		
C1407	B C	C2053	A C	C3550	A C	C4350	B C	C6212	A C	D1604	B C	3C	L3502	A C	3C		
C1408	B C	C2054	A C	C3551	A C	C4803	A C	C6213	A C	D2001	A C	4A	L3503	A C	2B		
C1409	B C	C2055	A C	C3552	A C	C4804	A C	C6214	A C	D2002	A C	4A	L3504	A C	2C		
C1410	B C	C2056	A C	C3553	A C	C4805	A C	C6215	A C	D3001	B C	3A	L3505	A C	2C		
C1411	B C	C2057	A C	C3554	A C	C4806	A C	C6216	A C	D3002	B C	3B	L3701	A C	1A		
C1412	B C	C2058	A C	C3555	A C	C4807	A C	C6217	A C	D3003	B C	3A	L3901	A C	3B		
C1413	B C	C2059	A C	C3556	A C	C4808	A C	C6218	A C	D3701	A C	1A	L3902	A C	3B		
C1414	B C	C2060	A C	C3557	A C	C4809	A C	C6219	A C	D5501	A C	3A	L3903	A C	4B		
C1415	B C	C2061	A C	C3558	A C	C4810	A C	C6220	A C	D6002	A C	2C	L3904	A C	3A		
C1416	B C	C2062	A C	C3559	A C	C4811	A C	C6221	A C	D6201	A C	2B	L3951	A C	3B		
C1417	B C	C2063	A C	C3560	A C	C4812	A C	C6222	A C	D6202	A C	2C	L3952	A C	3A		
C1418	B C	C2064	A C	C3561	A C	C4813	A C	C6223	A C	D6203	A C	1C	L3953	A C	3B		
C1419	B C	C2065	A C	C3562	A C	C4814	A C	C6224	A C	D6204	A C	1B	L4201	B C	4C		
C1420	B C	C2066	A C	C3563	A C	C4815	A C	C6225	A C	D6205	A C	1B	L4301	B C	4C		
C1601	B C	C2067	A C	C3564	A C	C4816	A C	C6226	A C	D6206	A C	2B	L4302	B C	4C		
C1602	B C	C2068	A C	C3565	A C	C4817	A C	C6227	A C	D6207	A C	2B	L4303	B C	5B		
C1603	B C	C2069	A C	C3566	A C	C4818	A C	C6228	A C	D6701	A C	2C	L4304	B C	4B		
C1604	B C	C2070	A C	C3567	A C	C4819	A C	C6229	A C	D6702	A C	2C	L4305	B C	4C		
C1605	B C	C2071	A C	C3568	A C	C4820	A C	C6230	A C	D8051	B C	2C	L4306	B C	4B		
C1606	B C	C2072	A C	C3569	A C	C4821	A C	C6231	A C	D8401	A C	5B	L4307	B C	3B		
C1607	A C	C2073	A C	C3570	A C	C4822	A C	C6701	A C	<b>IC</b>			L4802	A C	4C		
C1608	B C	C2074	A C	C3571	A C	C4823	A C	C6702	A C	IC1001	B C	4A	L4851	A C	4B		
C1609	B C	C2075	A C	C3572	A C	C4824	A C	C6703	A C	IC1002	B C	5A	L4852	A C	4B		
C1610	B C	C2076	A C	C3573	A C	C4825	A C	C6704	A C	IC1003	B C	4A	L4853	A C	4B		
C1611	B C	C2077	A C	C3574	A C	C4826	A C	C6705	A C	IC1004	B C	4B	L5501	A C	3C		
C1612	B C	C2078	A C	C3575	A C	C4827	A C	C8001	B C	IC1005	B C	4B	L5502	A C	3C		
C1613	B C	C2079	A C	C3576	A C	C4828	A C	C8002	B C	IC1006	B C	4B	L5503	A C	3D		
C1614	B C	C2080	A C	C3577	A C	C4829	A C	C8003	B C	IC1007	B C	4A	L5504	A C	3D		
C1615	B C	C2081	A C	C3578	A C	C4830	A C	C8004	B C	IC1009	B C	4A	L5505	A C	3D		
C1616	B C	C2082	A C	C3579	A C	C4831	A C	C8005	B C	IC1303	B C	3A	L5506	A C	3D		
C1617	B C	C2083	A C	C3580	A C	C4832	A C	C8006	B C	IC1304	B C	3A	L6101	A C	1B		
C1618	B C	C2084	A C	C3581	A C	C4833	A C	C8007	B C	IC1401	B C	3B	L6102	A C			

COMPONENT PARTS LOCATION GUIDE <MAIN/YB10317-01-03>

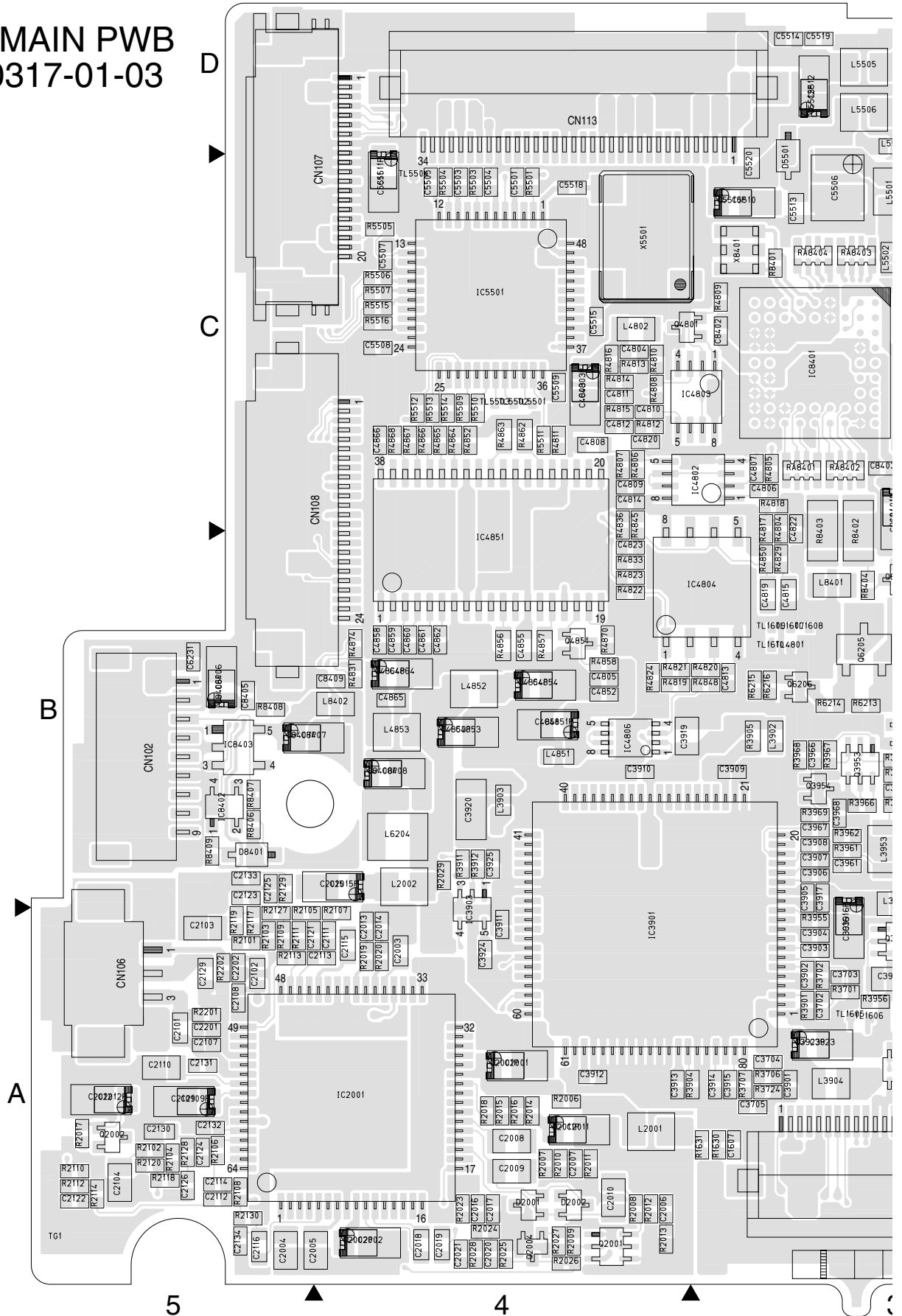
(2/2)

REF.NO.	LOCATION	REF.NO.	LOCATION	REF.NO.	LOCATION	REF.NO.	LOCATION	REF.NO.	LOCATION	REF.NO.	LOCATION	REF.NO.	LOCATION
<b>TRANSISTOR</b>													
Q1001	B C 4A	R1042	B C 4A	R1640	B C 3C	R3506	A C 2C	R4349	B C 5B	R6208	A C 3A	RA3001	B C 3A
Q1002	B C 4A	R1043	B C 4A	R1641	B C 3C	R3507	A C 3C	R4350	B C 4B	R6209	A C 3A	RA4301	B C 4D
Q1003	B C 4A	R1044	B C 5A	R1643	B C 3C	R3508	A C 3C	R4351	B C 5B	R6210	A C 3A	RA4302	B C 4D
Q1004	B C 4A	R1045	B C 5A	R1646	B C 3C	R3509	A C 2C	R4804	A C 3C	R6211	A C 3A	RA4303	B C 4D
Q1005	B C 4A	R1046	B C 5A	R2006	A C 4A	R3510	A C 3C	R4805	A C 3C	R6212	A C 3A	RA4304	B C 3C
Q1006	B C 5A	R1047	B C 5A	R2007	A C 4A	R3521	A C 3C	R4806	A C 4C	R6213	A C 3B	RA4305	B C 3C
Q1007	B C 5A	R1048	B C 5A	R2008	A C 4A	R3522	A C 2C	R4807	A C 4C	R6214	A C 3B	RA4306	B C 3B
Q1301	B C 3A	R1049	B C 5A	R2009	A C 4A	R3701	A C 3A	R4808	A C 4C	R6215	A C 3B	RA8401	A C 3C
Q1401	B C 3B	R1050	B C 5A	R2010	A C 4A	R3702	A C 3A	R4809	A C 3C	R6216	A C 3B	RA8402	A C 3C
Q1402	B C 3B	R1051	B C 4A	R2011	A C 4A	R3703	A C 3A	R4810	A C 4C	R6217	A C 3B	RA8403	A C 3C
Q1403	B C 3A	R1052	B C 4A	R2012	A C 4A	R3704	B C 5B	R4811	A C 4C	R6218	A C 2B	RA8404	A C 3C
Q1404	B C 3A	R1053	B C 4A	R2013	A C 4A	R3705	B C 5B	R4812	A C 4C	R6219	A C 3A	<b>OTHER</b>	
Q1404	B C 3A	R1054	B C 4A	R2014	A C 4A	R3706	A C 3A	R4813	A C 4C	R6220	A C 3A	F6101	A A 1B
Q1601	B C 3D	R1055	B C 4A	R2015	A C 4A	R3707	A C 3A	R4814	A C 4C	R6221	A C 3A	J101	A C 1A
Q2001	A C 4A	R1056	B C 4A	R2016	A C 4A	R3708	A C 3A	R4815	A C 4C	R6222	A C 3A	S6001	A C 1C
Q2002	A C 5A	R1057	B C 4A	R2017	A C 5A	R3709	A C 1A	R4816	A C 4C	R6223	A C 2A	TL1001	A C 4A
Q2004	A C 4A	R1058	B C 4A	R2018	A C 4A	R3710	A C 1A	R4817	A C 3C	R6224	A C 2A	TL1002	B C 4A
Q3701	A C 3A	R1060	B C 4A	R2019	A C 4A	R3711	A C 1A	R4818	A C 3C	R6225	A C 3A	TL1003	B C 4A
Q3702	A C 1A	R1061	B C 3A	R2020	A C 4A	R3712	A C 1A	R4819	A C 4B	R6226	A C 3A	TL1301	B C 4B
Q3703	A C 1A	R1062	B C 3A	R2023	A C 4A	R3713	A C 1A	R4820	A C 3B	R6227	A C 3A	TL1401	B C 3B
Q3951	A C 3A	R1080	B C 3A	R2024	A C 4A	R3714	A C 1A	R4821	A C 4B	R6228	A C 3A	TL1402	B C 3B
Q3952	A C 3B	R1302	B C 3A	R2025	A C 4A	R3715	A C 1A	R4822	A C 4B	R6229	A C 3A	TL1403	B C 3B
Q3953	A C 3B	R1305	B C 3A	R2026	A C 4A	R3716	A C 1A	R4823	A C 4B	R6230	A C 3B	TL1404	B C 3B
Q3954	A C 3B	R1306	B C 3A	R2027	A C 4A	R3717	A C 1A	R4824	A C 4B	R6231	A C 3B	TL1406	B C 3A
Q4301	B C 4B	R1401	B C 3B	R2028	A C 4A	R3718	A C 1A	R4825	A C 3B	R6232	A C 3B	TL1407	B C 3A
Q4302	B C 4B	R1402	B C 3B	R2029	A C 4B	R3719	A C 1A	R4826	A C 3B	R6233	A C 3B	TL1408	B C 3A
Q4303	B C 4B	R1403	B C 3B	R2101	A C 5A	R3721	A C 1A	R4831	A C 4B	R6234	A C 3B	TL1409	B C 3A
Q4801	A C 4C	R1407	B C 3B	R2102	A C 5A	R3722	A C 1A	R4833	A C 4B	R6235	A C 3B	TL1409	B C 3A
Q4851	A C 4B	R1408	B C 3B	R2103	A C 5A	R3723	A C 1A	R4836	A C 4C	R6236	A C 3B	TL1410	B C 3A
Q6001	A C 2A	R1409	B C 3B	R2104	A C 5A	R3724	A C 1A	R4845	A C 4C	R6237	A C 3B	TL1411	B C 3A
Q6002	A C 2A	R1410	B C 3B	R2105	A C 5A	R3725	A C 3A	R4848	A C 3B	R6238	A C 3B	TL1412	B C 3B
Q6003	A C 2A	R1411	B C 3B	R2106	A C 5A	R3901	A C 3A	R4850	A C 3B	R6239	A C 3B	TL1413	B C 3B
Q6004	A C 2A	R1412	B C 3B	R2107	A C 5A	R3904	A C 4A	R4852	A C 4C	R6240	A C 3B	TL1414	B C 3B
Q6101	A C 3B	R1413	B C 3B	R2108	A C 5A	R3905	A C 3B	R4856	A C 4C	R6241	A C 3B	TL1414	B C 3A
Q6102	A C 3B	R1414	B C 3A	R2109	A C 5A	R3911	A C 4B	R4857	A C 4B	R6242	A C 2B	TL1415	B C 3A
Q6201	A C 1B	R1415	B C 3A	R2110	A C 5A	R3912	A C 4B	R4858	A C 4B	R6243	A C 2B	TL1416	B C 3A
Q6202	A C 2A	R1416	B C 3A	R2111	A C 5A	R3951	A C 3A	R4862	A C 4C	R6244	A C 2B	TL1601	B C 3C
Q6203	A C 1C	R1417	B C 3B	R2112	A C 5A	R3952	A C 3A	R4863	A C 4C	R6245	A C 2B	TL1602	B C 3C
Q6204	A C 1C	R1418	B C 3B	R2113	A C 5A	R3953	A C 3A	R4864	A C 4C	R6246	A C 2B	TL1603	B C 3C
Q6205	A C 3B	R1419	B C 3A	R2114	A C 5A	R3954	A C 3A	R4865	A C 4C	R6701	A C 2C	TL1604	B C 3D
Q6206	A C 3B	R1420	B C 3A	R2117	A C 5A	R3955	A C 3A	R4866	A C 4C	R6702	A C 2C	TL1605	A C 3A
Q6207	A C 2B	R1422	B C 3B	R2118	A C 5A	R3956	A C 3A	R4867	A C 4C	R6703	A C 2C	TL1606	A C 3A
Q6208	A C 1C	R1423	B C 3B	R2119	A C 5A	R3961	A C 3B	R4868	A C 4C	R6712	A C 1A	TL1607	A C 3B
Q6210	A C 1B	R1424	B C 3B	R2120	A C 5A	R3962	A C 3B	R4870	A C 4B	R6713	A C 1A	TL1608	A C 3B
Q6211	A C 1B	R1425	B C 3B	R2127	A C 5A	R3963	A C 3B	R4874	A C 4B	R8001	B C 3C	TL1609	A C 3B
Q6212	A C 3B	R1426	B C 3B	R2128	A C 5A	R3964	A C 3B	R5501	A C 4C	R8002	B C 2C	TL1610	A C 3B
Q6213	A C 2B	R1427	B C 3B	R2129	A C 5B	R3965	A C 3B	R5503	A C 4C	R8003	B C 2C	TL1611	A C 2B
Q6214	A C 2B	R1428	B C 3B	R2130	A C 5A	R3966	A C 3B	R5504	A C 4C	R8004	B C 1C	TL1612	B C 3D
Q6215	A C 3B	R1429	B C 3B	R2201	A C 5A	R3967	A C 3B	R5505	A C 4C	R8006	B C 2B	TL1613	B C 3B
Q6216	A C 3B	R1430	B C 3B	R2202	A C 5A	R3968	A C 3B	R5506	A C 4C	R8013	B C 2C	TL1614	B C 3D
Q6217	A C 2B	R1432	B C 3A	R3002	B C 2A	R3969	A C 3B	R5507	A C 4C	R8014	B C 2C	TL1615	B C 3D
Q6701	A C 2D	R1433	B C 3A	R3004	B C 2A	R4201	B C 5C	R5509	A C 4C	R8015	B C 1C	TL1616	B C 3C
Q8001	B C 3C	R1434	B C 3A	R3007	B C 2A	R4202	B C 5C	R5510	A C 4C	R8016	B C 1C	TL1617	B C 3C
Q8401	A C 3B	R1435	B C 3A	R3008	B C 2A	R4203	B C 5C	R5511	A C 4C	R8017	B C 1C	TL1618	B C 3C
		R1436	B C 3A	R3009	B C 3A	R4204	B C 5D	R5512	A C 4C	R8018	B C 1C	TL1619	B C 3C
		R1437	B C 3A	R3010	B C 3A	R4205	B C 4C	R5513	A C 4C	R8019	B C 1C	TL3001	B C 1A
R1001	B C 4A	R1439	B C 3A	R3011	B C 3A	R4206	B C 4C	R5514	A C 4C	R8020	B C 1C	TL3002	B C 2C
R1002	B C 5B	R1440	B C 3A	R3013	B C 2A	R4207	B C 4C	R5515	A C 4C	R8021	B C 1C	TL3004	B C 1C
R1003	B C 5B	R1441	B C 3A	R3014	B C 2A	R4208	B C 4C	R5516	A C 4C	R8022	B C 2C	TL3501	B C 1C
R1004	B C 5B	R1442	B C 3A	R3015	B C 2A	R4301	B C 4B	R6001	A C 2A	R8023	B C 2C	TL4201	B C 4C
R1005	B C 5B	R1443	B C 3A	R3016	B C 1A	R4302	B C 3C	R6002	A C 2A	R8024	B C 2C	TL4202	B C 5C
R1006	B C 5B	R1444	B C 3A	R3017	B C 1A	R4303	B C 5C	R6003	A C 2A	R8025	B C 2C	TL4203	B C 5D
R1007	B C 5B	R1445	B C 3A	R3018	B C 1A	R4304	B C 5C	R6004	A C 2A	R8026	B C 2C	TL4301	B C 3C
R1008	B C 3A	R1601	B C 3C	R3019	B C 1A	R4307	B C 5C	R6005	A C 2A	R8027	B C 2C	TL4302	B C 4B
R1009	B C 4A	R1602	B C 3C	R3020	B C 1A	R4308	B C 5C	R6009	A C 1A	R8028	B C 2D	TL4303	B C 4B
R1010	B C 5A	R1603	B C 3C	R3021	B C 1A	R4311	B C 5B	R6010	A C 2A	R8030	B C 3C	TL4304	B C 4C
R1011	B C 4A	R1604	B C 3C	R3022	B C 1A	R4312	B C 5B	R6011	A C 2A	R8031	B C 3C	TL4305	B C 4B
R1012	B C 4A	R1605	B C 3D	R3023	B C 1A	R4313	B C 5B	R6012	A C 2A	R8035	B C 3B	TL4306	B C 4B
R1013	B C 4A	R1606	B C 2C	R3024	B C 1A	R4314	B C 5B	R6013	A C 2A	R8036	B C 3C	TL4307	B C 4B
R1014	B C 4A	R1607	B C 3C	R3026	B C 2B	R4315	B C 5B	R6014	A C 1B	R8037	B C 1C	TL4308	B C 4B
R1015	B C 4A	R1608	B C 3C	R3027	B C 3A	R4316	B C 5B	R6015	A C 1B	R8038	B C 1C	TL4309	B C 4B
R1016	B C 4A	R1609	B C 3C	R3028	B C 2B	R4317	B C 4B	R6016	A C 1B	R8053	B C 2C	TL4310	B C 4B
R1017	B C 3A	R1610	B C 3C	R3029	B C 2B	R4318	B C 4B	R6101	A C 2B	R8056	B C 2C	TL4311	B C 4B
R1018	B C 3A	R1611	B C 4D	R3030	B C 3B	R4319	B C 4B	R6102	A C 2B	R8057	B C 2C	TL4312	B C 4B
R1019	B C 3A	R1612	B C 3C	R3031	B C 3A	R4320	B C 4B	R6103	A C 3B	R8059	B C 2C	TL4313	B C 4B
R1020	B C 3A	R1613	B C 3C	R3032	B C 3A	R4321	B C 4B	R6104	A C 3B	R8060	B C 2C	TL4314	B C 4B
R1021	B C 3A	R1614	B C 3C	R3033	B C 3A	R4322	B C 4B	R6105	A C 2B	R8061	B C 1C	TL4405	B C 4B
R1022	B C 3A	R1615	B C 3C	R3034	B C 3A	R4323	B C 4B	R6106	A C 2B	R8401	A C 3C	TL4801	A C 3B
R1023	B C 4B	R1616	B C 3C	R3035	B C 2B	R4324	B C 4B	R6107	A C 3B	R8402	A C 3C	TL5501	A C 4C
R1024	B C 4B	R1617	B C 3C	R3036	B C 2A	R4325	B C 4B	R6108	A C 3B	R8403	A C 3C	TL5502	A C 4C
R1025	B C 4B	R1618	B C 3C	R3041	B C 1A	R4326	B C 4B	R6109	A C 3B	R8404	A C 3B	TL5503	A C 4C
R1026	B C 4B	R1619	B C 3C	R3042	B C 1A	R4327	B C 4B	R6110					



0 1 MAIN PWB  
YB10317-01-03

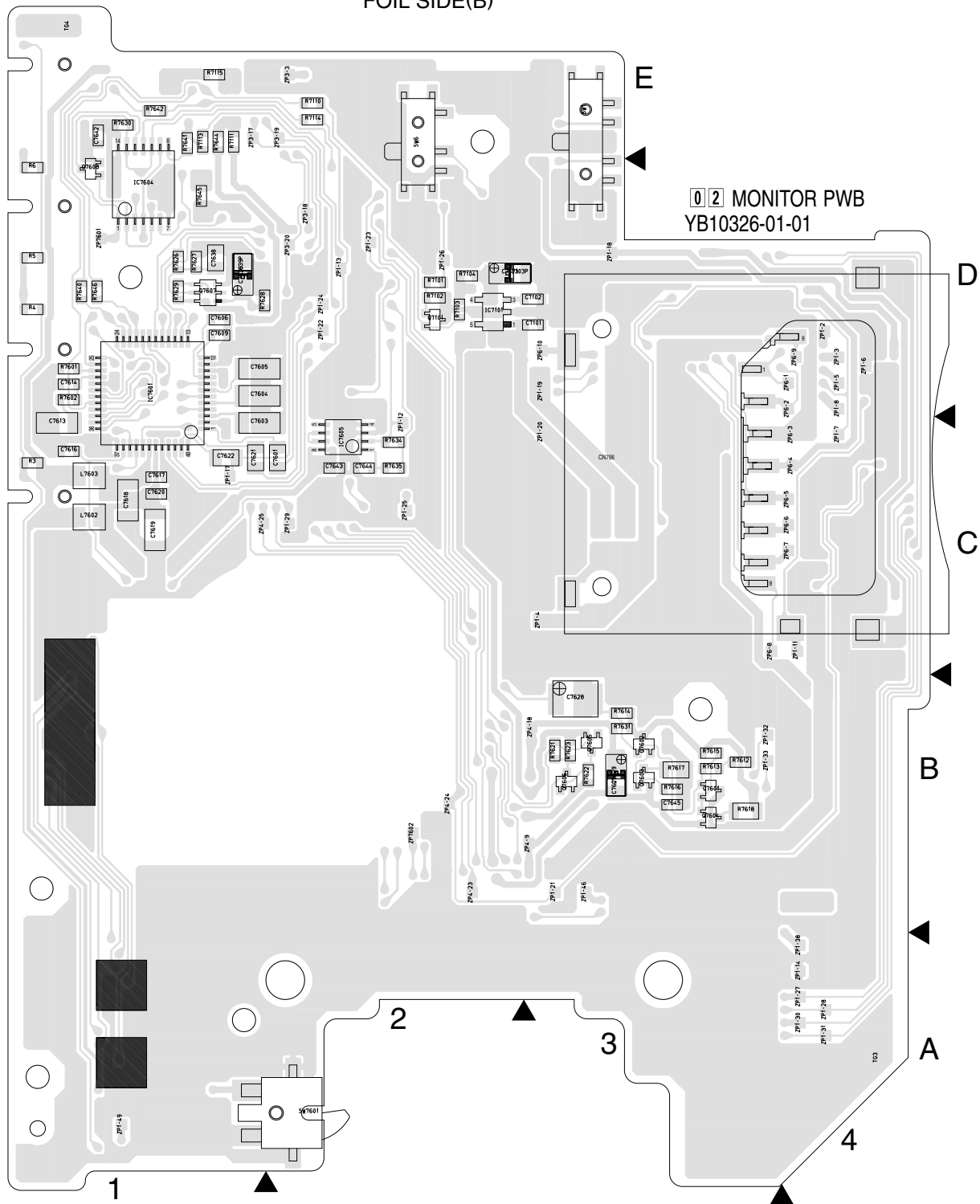
COMPONENT SIDE(A)





## 4.2 MONITOR CIRCUIT BOARD

FOIL SIDE(B)

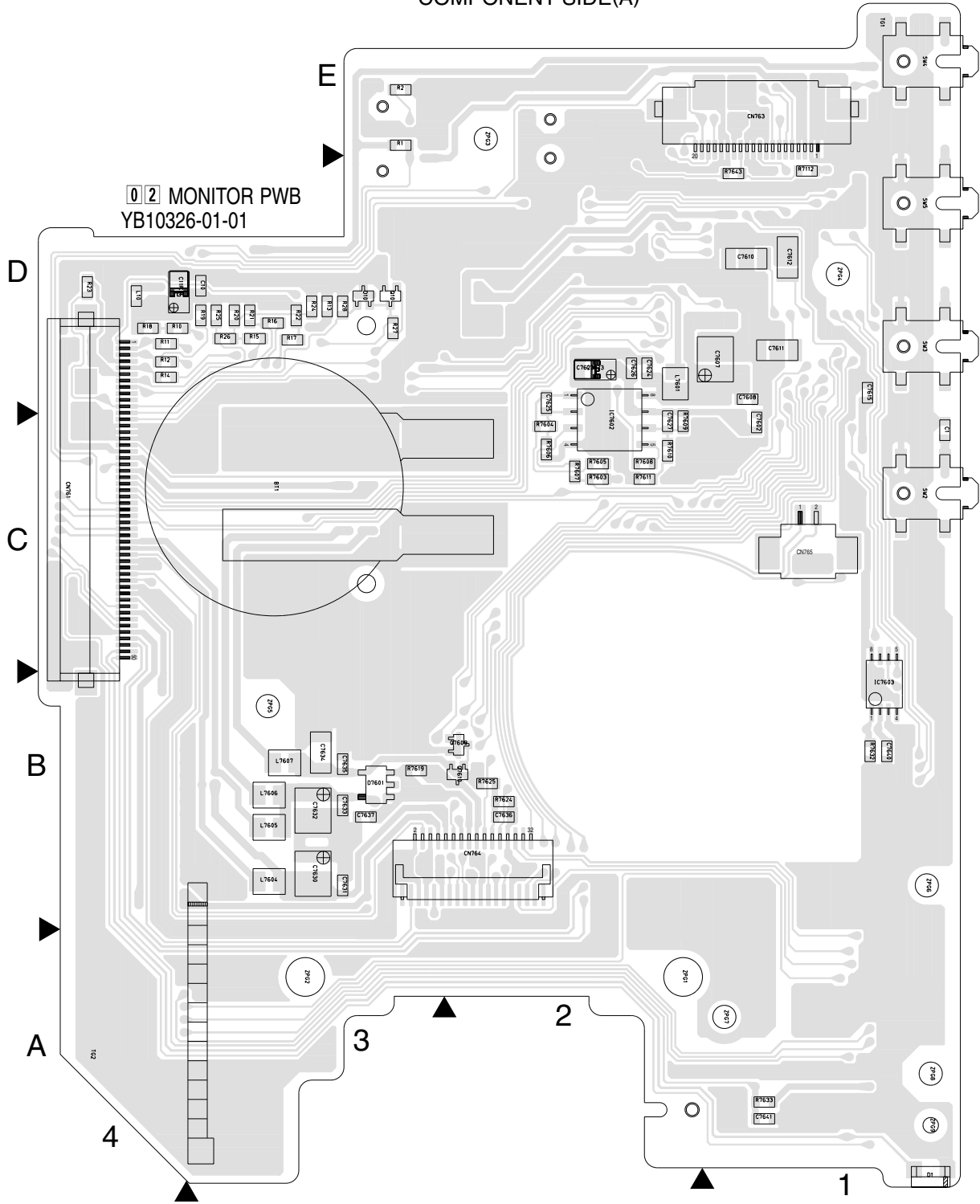


COMPONENT PARTS LOCATION GUIDE <MONITOR/YB10326-01-01>

(1/2)

REF.NO.	LOCATION	REF.NO.	LOCATION	REF.NO.	LOCATION	REF.NO.	LOCATION	REF.NO.	LOCATION	REF.NO.	LOCATION	REF.NO.	LOCATION	REF.NO.	LOCATION				
<b>CAPACITOR</b>																			
C1	A C 1C	C7609	B C 1D	C7624	A C 2D	C7639	B C 1D	<b>DIODE</b>				L7602	B C 1C	Q7607	B C 1D	R14	A C 4D	R7101	B C 2D
C10	A C 3D	C7610	A C 1D	C7625	A C 2D	C7640	A C 1B	D1	A C 1A	L7603	B C 1C	Q7608	B C 1D	R15	A C 3D	R7102	B C 2D		
C11	A C 3D	C7611	A C 1D	C7626	A C 2D	C7641	A C 1A	D10	A C 3D	L7604	A C 3B	Q7609	A C 2B	R16	A C 3D	R7103	B C 2D		
C7101	A B C 2D	C7612	A C 1D	C7627	A C 2C	C7642	B C 1E	D7601	A C 3B	L7605	A C 3B	Q7610	A C 2B	R17	A C 3D	R7104	B C 2D		
C7102	B C 2D	C7613	B C 1C	C7628	B C 3B	C7643	B C 2C	<b>IC</b>				<b>RESISTOR</b>							
C7103	B C 2D	C7614	A C 1D	C7629	A C 3B	C7644	B C 2C	IC7101	B C 2D	L7606	A C 3B	R1	A C 3E	R18	A C 4D	R7110	B C 2E		
C7601	B C 1C	C7615	A C 1D	C7630	A C 3B	C7645	B C 3B	IC7601	B C 1D	L7607	A C 3B	R2	A C 3E	R19	A C 3D	R7111	B C 1E		
C7602	A C 1C	C7616	B C 1C	C7631	A C 3B	<b>CONNECTOR</b>				<b>TRANSISTOR</b>				R3	A C 1C	R20	A C 3D	R7112	A C 1E
C7603	B C 1C	C7617	B C 1C	C7632	A C 3B	CN761	A C 4D	Q10	A C 3D	Q7601	B C 2D	R4	B C 1D	R21	A C 3D	R7113	B C 1E		
C7604	B C 1C	C7618	B C 1C	C7633	A C 3B	CN763	A C 1E	Q7602	B C 3B	Q7603	B C 3B	R5	B C 1D	R22	A C 3D	R7114	B C 2E		
C7605	B C 1C	C7619	B C 1C	C7634	A C 3B	CN764	A C 3B	Q7604	B C 3B	Q7604	B C 3B	R6	B C 1D	R23	A C 4D	R7115	B C 1E		
C7606	B C 1D	C7620	B C 1C	C7635	A C 3B	CN765	A C 1C	Q7605	B C 3B	Q7605	B C 3B	R7	A C 3D	R24	A C 3D	R7601	B C 1D		
C7607	A C 1D	C7621	B C 1C	C7636	A C 2B	CN766	B C 4C	Q7606	B C 3B	Q7606	B C 3B	R8	A C 3D	R25	A C 3D	R7602	B C 1D		
C7608	A C 1D	C7622	B C 1C	C7637	A C 3B	<b>COIL</b>				Q7607	B C 3B	R9	A C 4D	R26	A C 3D	R7603	A C 2C		
		C7623	A C 2D	C7638	B C 1D	L7601	A C 2D	Q7608	B C 3B	Q7608	B C 3B	R10	A C 4D	R27	A C 3D	R7604	A C 2C		
								Q7609	B C 3B	Q7609	B C 3B	R11	A C 3D	R28	A C 3D	R7605	A C 2C		

COMPONENT SIDE(A)



COMPONENT PARTS LOCATION GUIDE <MONITOR/YB10326-01-01>

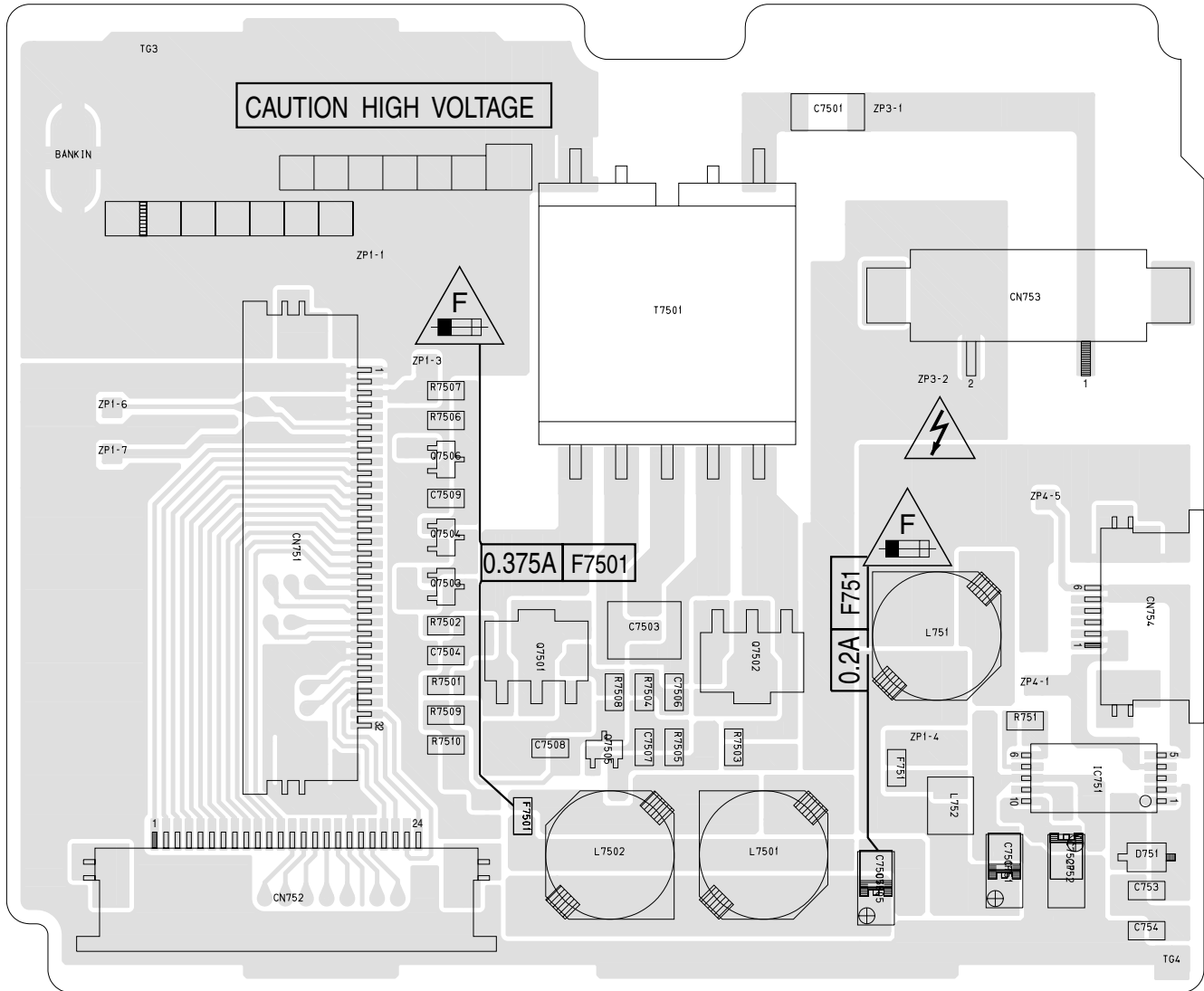
(2/2)

REF.NO.	LOCATION	REF.NO.	LOCATION	REF.NO.	LOCATION	REF.NO.	LOCATION	REF.NO.	LOCATION	REF.NO.	LOCATION	REF.NO.	LOCATION	REF.NO.	LOCATION	
R7606	A C 2C	R7622	B C 3B	R7641	B C 1E	SW3	A C 1D	ZP3-3	B C 2E	ZP1-17	B C 1C	ZP1-32	B C 3B	ZP7602	B C 2B	
R7607	A C 2C	R7623	B C 3B	R7642	B C 1E	SW4	A C 1E	ZP4-9	B C 2B	ZP1-18	B C 3D	ZP1-33	B C 3B	ZPG1	A D 2A	
R7608	A C 2C	R7624	A C 2B	R7643	A C 1D	SW5	A C 1D	ZP6-1	B C 3D	ZP1-19	B C 3D	ZP1-38	B C 4A	ZPG2	A D 3A	
R7609	A C 2C	R7625	A C 2B	R7644	B C 1E	SW6	B C 2E	ZP6-2	B C 3C	ZP1-20	B C 3C	ZP1-46	B C 3B	ZPG3	A D 2E	
R7610	A C 2C	R7626	B C 1D	R7645	B C 1D	SW7601	B C 2A	ZP6-3	B C 3C	ZP1-21	B C 3B	ZP1-49	B C 1A	ZPG4	A D 1D	
R7611	A C 2C	R7627	B C 1D	R7646	B C 1D	TM1	A C 4A	ZP6-4	B C 3C	ZP1-22	B C 2D	ZP3-17	B C 1E	ZPG5	A D 3B	
R7612	B C 3B	R7628	B C 1D	OTHER			TM03	A C 4E	ZP6-5	B C 3C	ZP1-23	B C 2D	ZP3-18	B C 2D	ZPG6	A D 1B
R7613	B C 3B	R7629	B C 1E	BT1	A A 3C	TM3	A C 4E	ZP6-6	B C 3C	ZP1-24	B C 2D	ZP3-19	B C 1E	ZPG7	A D 1A	
R7614	B C 3B	R7630	B C 1E	C7103P	A A 3D	ZP1-2	B C 4D	ZP6-7	B C 3C	ZP1-25	B C 2C	ZP3-20	B C 2D	ZPG8	A D 1A	
R7615	B C 3B	R7631	B C 3B	C7623P	A A 2D	ZP1-3	B C 4D	ZP6-8	B C 3C	ZP1-26	B C 2D	ZP4-18	B C 2B	ZPG9	A D 1A	
R7616	B C 3B	R7632	A C 1B	C7629P	A A 3B	ZP1-4	B C 3C	ZP6-9	B C 3D	ZP1-27	B C 4A	ZP4-23	B C 2B			
R7617	B C 3B	R7633	A C 1A	C7639P	A A 3B	ZP1-5	B C 4D	ZP1-11	B C 4C	ZP1-28	B C 4A	ZP4-24	B C 2B			
R7618	B C 3B	R7634	B C 2C	SW1	B C 1D	ZP1-6	B C 4C	ZP1-12	B C 2C	ZP1-29	B C 2C	ZP4-25	B C 1C			
R7619	A C 3B	R7635	B C 2C	SW2	B C 3E	ZP1-7	B C 4C	ZP1-13	B C 2D	ZP1-30	B C 4A	ZP6-10	B C 3D			
R7621	B C 3B	R7640	B C 1D		A C 1C	ZP1-8	B C 4C	ZP1-14	B C 4A	ZP1-31	B C 4A	ZP7601	B C 1D			

### 4.3 LCD BL CIRCUIT BOARD

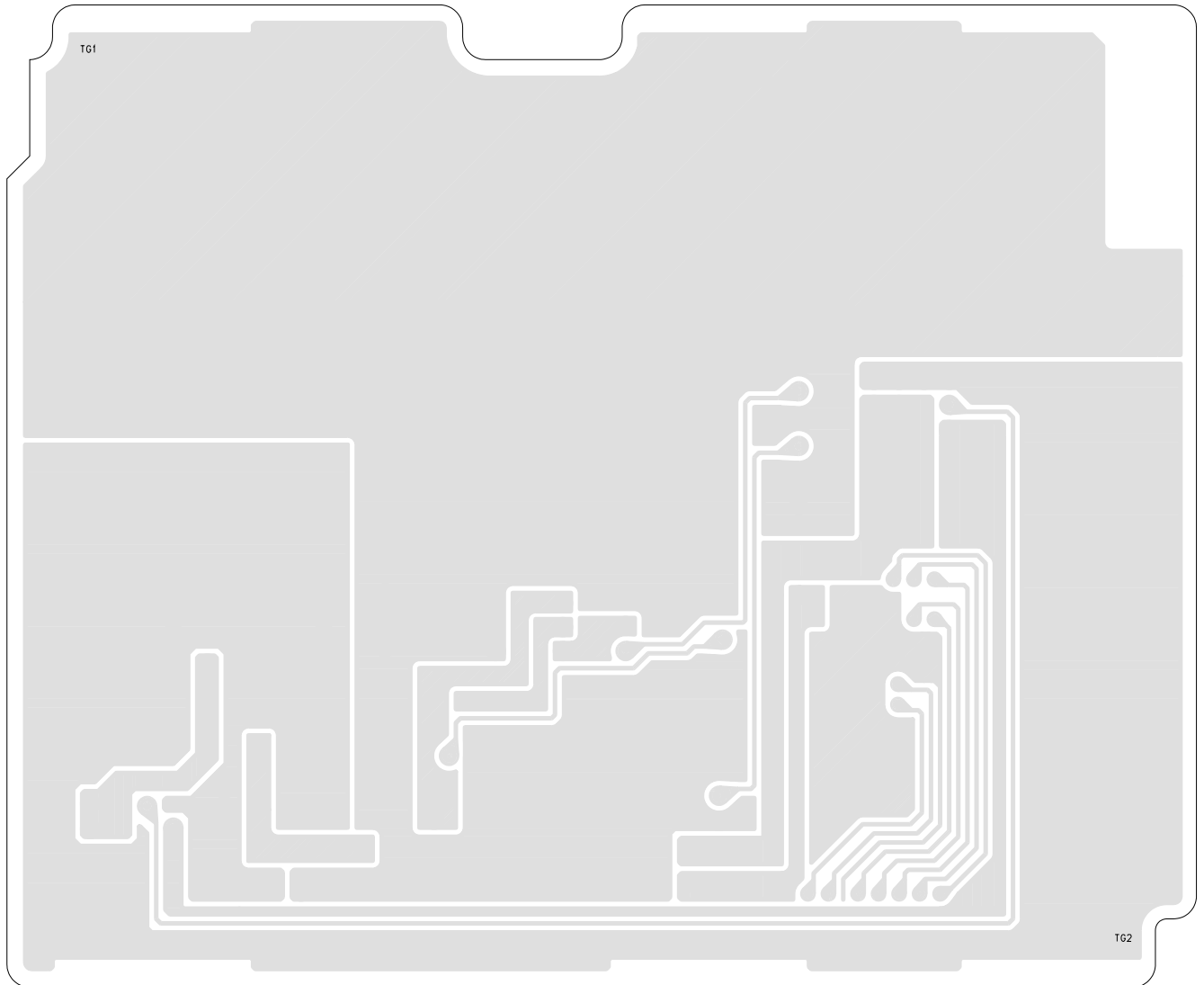
03 LCD BL PWB  
YB10325

FOIL SIDE(B)



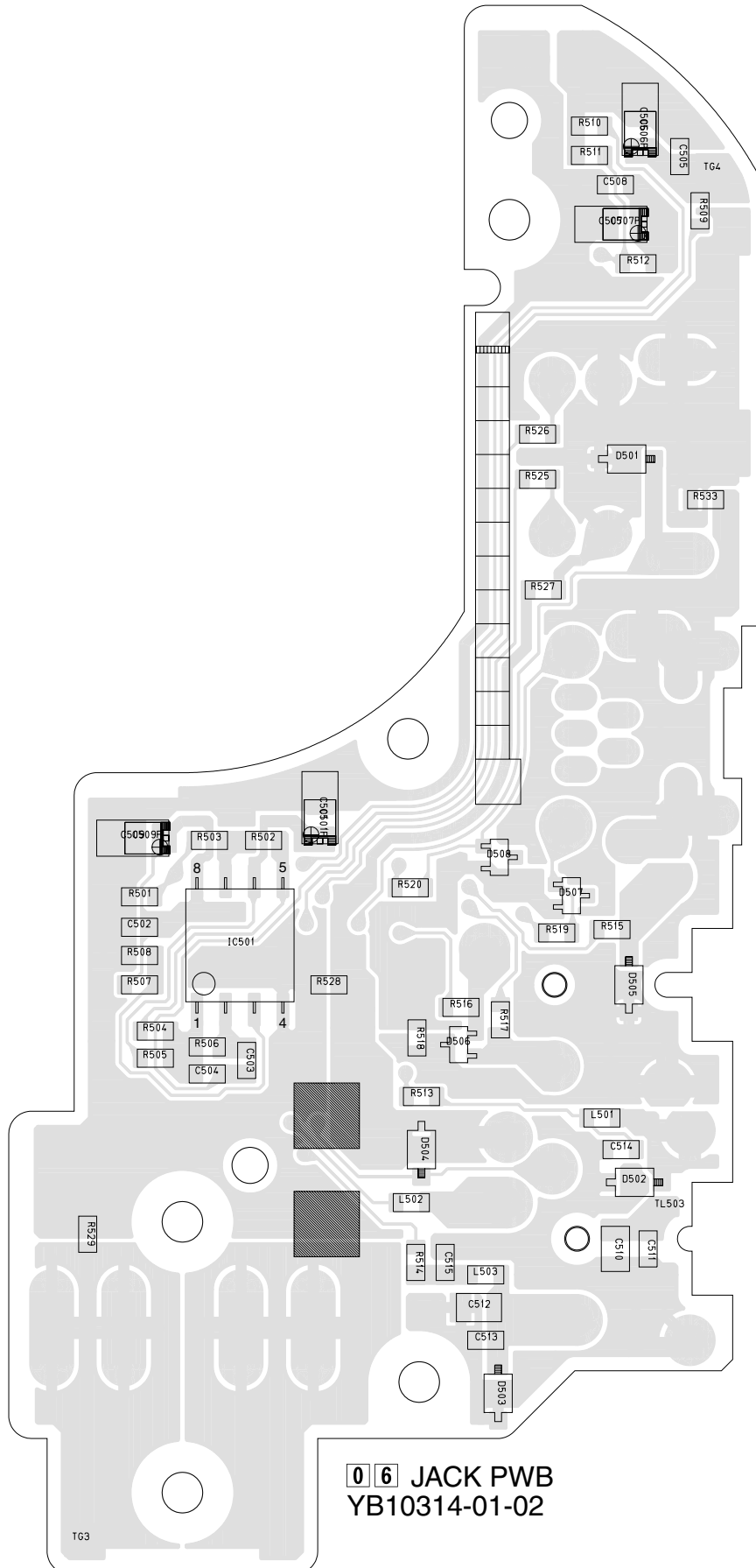
COMPONENT SIDE(A)

03 LCD BL PWB  
YB10325

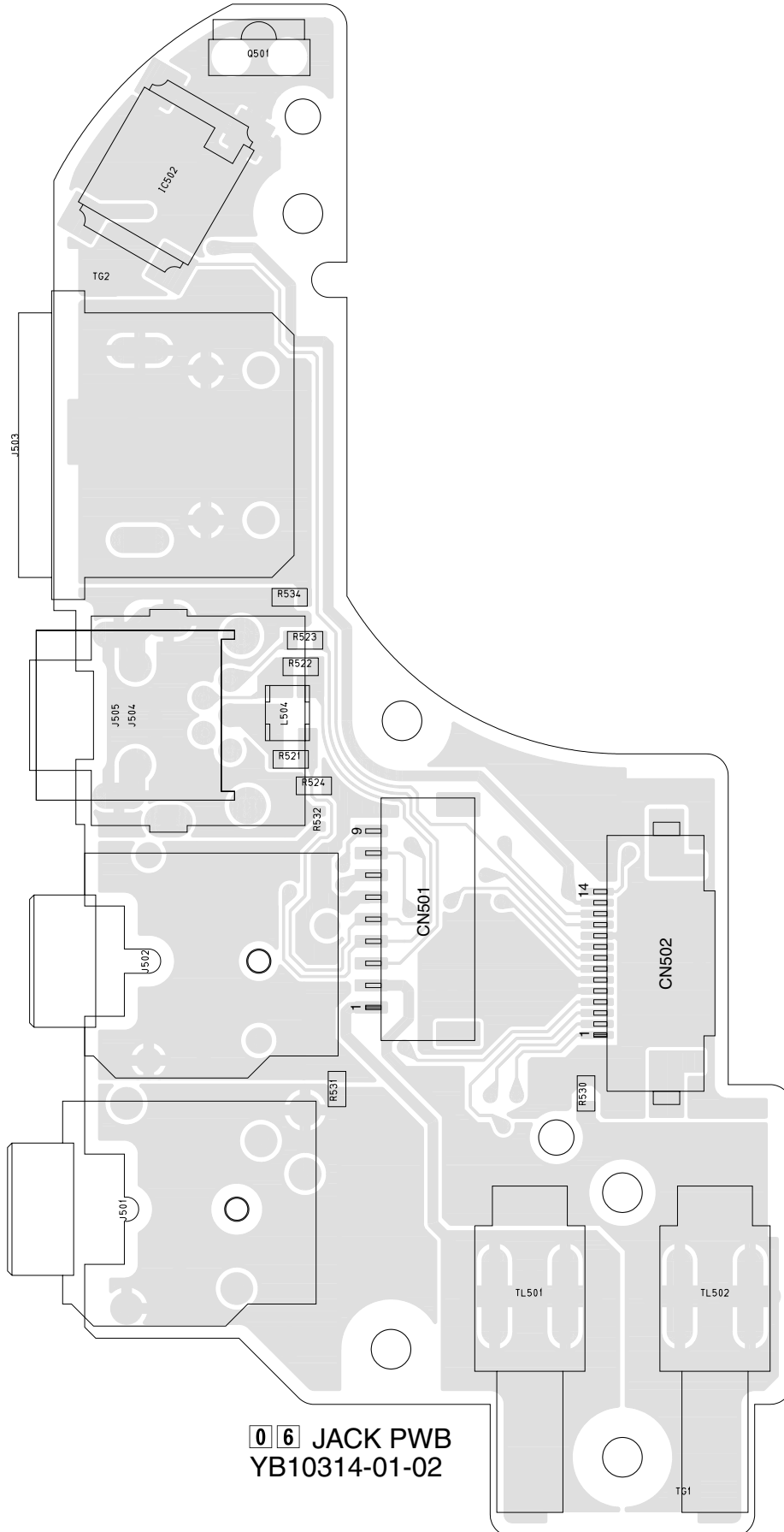


# 4.4 JACK CIRCUIT BOARD

FOIL SIDE(B)



COMPONENT SIDE(A)



06 JACK PWB  
YB10314-01-02



## 4.5 JUNCTION CIRCUIT BOARD

